

# REVIEW AREA 1

USACE Reviewed Jurisdictional  
Determination Area (red polygon)  
Approved 14 OCTOBER 2020

D1

WF  
4.055± AC

WE  
4.218±  
AC

WH  
3.180± AC

WG  
5.550± AC

## LEGEND

- Jurisdictional Determination (70± AC)
- Non-Adjacent Wetland
- Ditch "D-1" (412± LF)

0 500  
Feet



## REVIEW AREA 1: WATERS OF THE U.S. FEATURES MAP TWIN PINES MINERALS

ST. GEORGE, CHARLTON COUNTY, GEORGIA

BASEMAP: Maxar, Vivid Imagery, 11/20/2019 (0.5 m Resolution, West), 3/24/2018 (0.46 m Resolution, East).

DRAWN BY: DEK

CHECKED BY: CMS

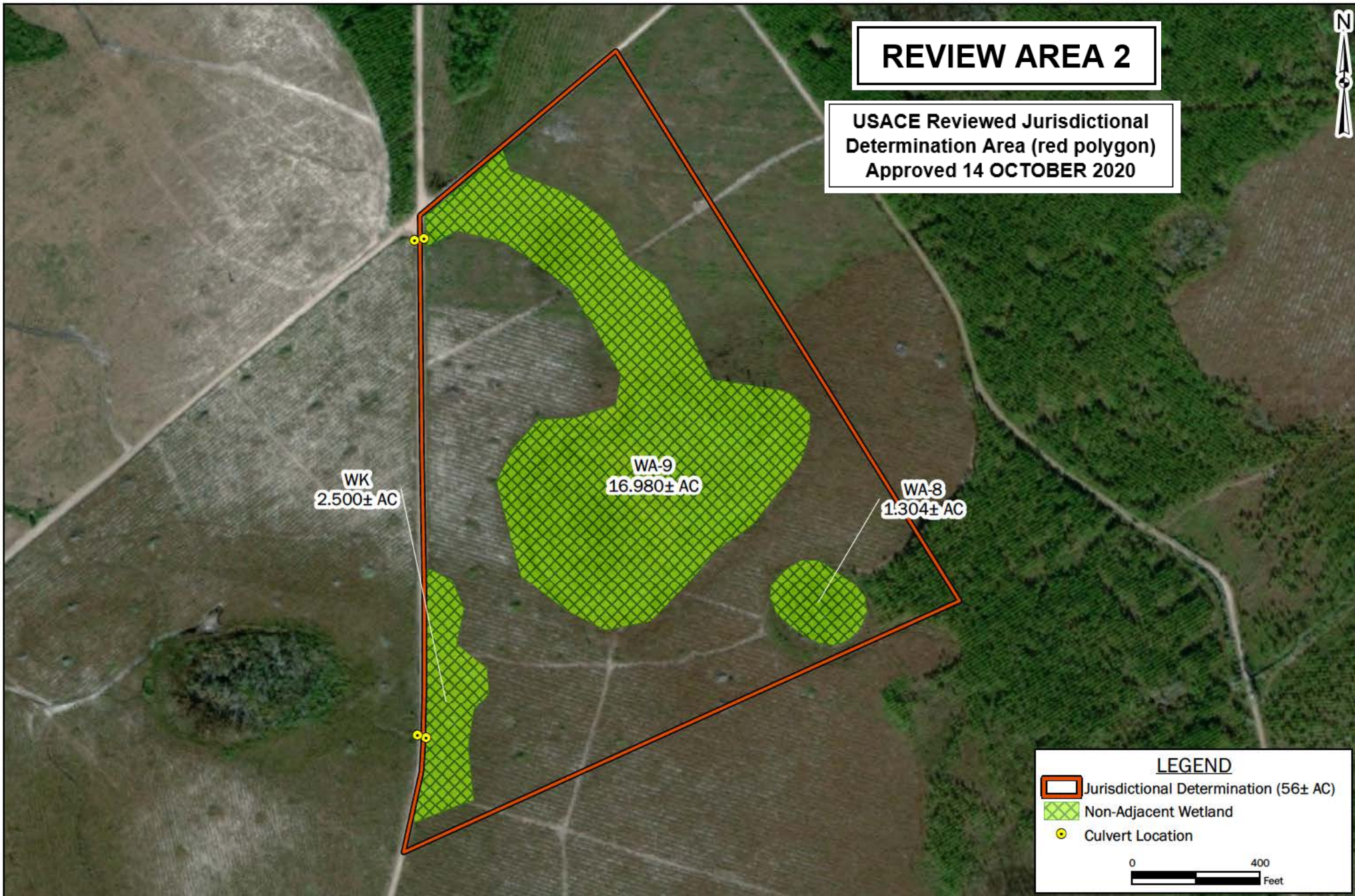
DRAWING DATE: 9/23/2020

REVISION DATE: 10/7/2020

TTL JOB NO.: 000180200804.00

APPROX. SCALE: 1 in = 500 ft





REVIEW AREA 2: WATERS OF THE U.S. FEATURES MAP  
TWIN PINES MINERALS

ST. GEORGE, CHARLTON COUNTY, GEORGIA

BASEMAP: Maxar, Vivid Imagery, 11/20/2019 (0.5 m Resolution, West), 3/24/2018 (0.46 m Resolution, East).

DRAWN BY: DEK

CHECKED BY: CMS

DRAWING DATE: 9/23/2020

REVISION DATE: 10/7/2020

TTL JOB NO.: 000180200804.00

APPROX. SCALE: 1 in = 400 ft



## REVIEW AREA 3

USACE Reviewed Jurisdictional  
Determination Area (red polygon)  
Approved 14 OCTOBER 2020



### LEGEND

- Jurisdictional Determination (67± AC)
- Non-Adjacent Wetland
- Roadside Ditch & Drainage Direction "D-2" (1,090± LF)
- Culvert Location

0 300  
Feet



### REVIEW AREA 3: WATERS OF THE U.S. FEATURES MAP TWIN PINES MINERALS

ST. GEORGE, CHARLTON COUNTY, GEORGIA

BASEMAP: Maxar, Vivid Imagery, 11/20/2019 (0.5 m Resolution, West), 3/24/2018 (0.46 m Resolution, East).

DRAWN BY: DEK

CHECKED BY: CMS

DRAWING DATE: 9/23/2020

REVISION DATE: 10/7/2020

TTL JOB NO.: 000180200804.00

APPROX. SCALE: 1 in = 300 ft



# REVIEW AREA 4

USACE Reviewed Jurisdictional  
Determination Area (red polygon)  
Approved 14 OCTOBER 2020

WA-4  
19.097± AC

WA-3  
103.714± AC

WJ  
1.071± AC

D-3

## LEGEND

- Jurisdictional Determination (225± AC)
- Non-Adjacent Wetland
- Ditch & Drainage Direction "D-3" (412± LF)
- Culvert Location

0 700  
Feet



## REVIEW AREA 4: WATERS OF THE U.S. FEATURES MAP TWIN PINES MINERALS

ST. GEORGE, CHARLTON COUNTY, GEORGIA

BASEMAP: Maxar, Vivid Imagery, 11/20/2019 (0.5 m Resolution, West), 3/24/2018 (0.46 m Resolution, East).

DRAWN BY: DEK

CHECKED BY: CMS

DRAWING DATE: 9/23/2020

REVISION DATE: 10/7/2020

TTL JOB NO.: 000180200804.00

APPROX. SCALE: 1 in = 700 ft



## LEGEND

-  Jurisdictional Determination (295± AC)
-  Non-Adjacent Wetland
-  Ditch & Drainage Direction "D-5" (648± LF)
-  Culvert Location

0 700  
Feet



## REVIEW AREA 5

USACE Reviewed Jurisdictional  
Determination Area (red polygon)  
Approved 14 OCTOBER 2020

WA-2  
153.254± AC

WD  
6.323± AC

WC  
0.957±  
AC

WH  
14.141±  
AC

WH

D-5



## REVIEW AREA 5: WATERS OF THE U.S. FEATURES MAP TWIN PINES MINERALS

ST. GEORGE, CHARLTON COUNTY, GEORGIA

BASEMAP: Maxar, Vivid Imagery, 11/20/2019 (0.5 m Resolution, West), 3/24/2018 (0.46 m Resolution, East).

DRAWN BY: DEK

CHECKED BY: CMS

DRAWING DATE: 9/23/2020

REVISION DATE: 10/7/2020

TTL JOB NO.: 000180200804.00

APPROX. SCALE: 1 in = 700 ft